



GRAD KUTINA  
TOWN KUTINA

HRVATSKA  
CROATIA

# INVEST IN KUTINA

2017 -2021

**INVESTMENT INCENTIVES  
& OPPORTUNITIES**



## Position on the map of Europe

Kutina is settled on **the Paneuropean corridor X.**

Salzburg – Ljubljana – Zagreb – Belgrade – Niš – Skopje – Veles – Thessaloniki



E – 70 highway A4 Zagreb – Slavonski Brod \* exit Kutina



Electrified and modern freight railway station Kutina, one of the largest in Croatia – 1,2 tons of goods per year



85 km to Zagreb airport



235 km to Rijeka Adriatic sea port

45 km to Sisak Sava river port

Road distances to some Croatian and European cities:

**Zagreb** 81 km

**Osijek** 203 km

**Ljubljana** 220 km

**Rijeka** 239 km

**Budapest** 243 km

**Graz** 266 km

**Sarajevo** 298 km

**Belgrade** 317 km

**Trieste** 324 km

**Zadar** 365 km

**Vienna** 452 km

**Bratislava** 496 km

**Salzburg** 498 km

**Munich** 630 km

**Sofija** 710 km

**Prague** 728 km

**Skopje** 764 km

**Warsaw** 1123 km

INVEST  
IN KUTINA

## PZK2 Business Zone Kutina 2

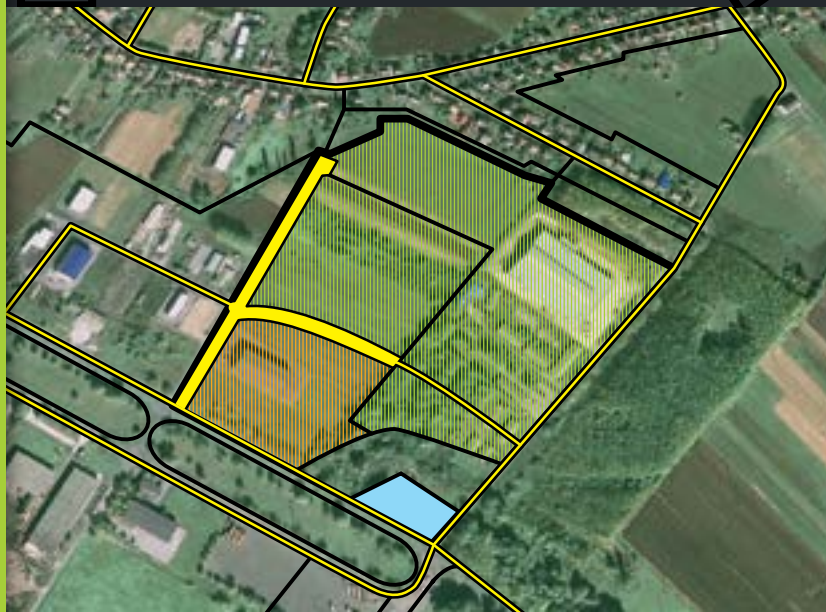
**Land area:** 20.000 m<sup>2</sup>

**Owner:** 100% Town of Kutina

**Purpose:** premises for production activities, workshops, trade services and other labor-intensive activities

**Available infrastructure:** water supply, sewerage system, gas installation, electricity, roads

**Price:** 3€/m<sup>2</sup>



## PZK3 Business Zone Kutina 3

**Total area:** 30.000 m<sup>2</sup>

**Plots:** 1,500 – 30,000 m<sup>2</sup>

**Owner:** 100% Town of Kutina

**Purpose:** premises for production activities, workshops, trade services and other labor-intensive activities

**Available infrastructure:** water supply, sewerage system, gas installation, electricity, roads

**Price:** 3€/m<sup>2</sup>



## Incentives for Investors in Kutina

**Industrial and business environment** with respectable companies Petrokemija Plc., Selk Plc., Almos Ltd., Turbomehanika Ltd., Cjevomont Ltd., Montaža Smola Ltd., Slukom Ltd., RMP Ltd., Messer Ltd. And 340 registered crafts and SME-s

**Skilled industrial labor force** (steel construction industry, chemical industry, electronic industry, constructions)

Low land prices - € 3 per square meter

### Attractive benefits for investors:

- 75% or more discount of the municipal contribution
- 5-year-delay of payment of municipal fees
- up to 100% free connection to the communal infrastructure for water supply, drainage, gas installation
- up to 5% interest subsidy through the County business loans
- up to 1300 euros incentives for newly employed
- fastest possible delivery of building permits
- other incentives possible in negotiation process

**Support in acquiring necessary skills and knowledge** through public funding in the Open University Kutina

**Co-financing the costs of connection** to the electricity grid (HEP d.d.)

Advisory and **operational support for entrepreneurs** from Development Agency MRAV d.o.o.

**Development and scientific research** activities with Technology Park Kutina & Impulse Centre

**Highly skilled technical assistance** by the Town of Kutina administration in obtaining the necessary documentation from all levels



INVEST  
IN KUTINA



## **ILZ** Industry – logistics zone

**Area:** 120 ha

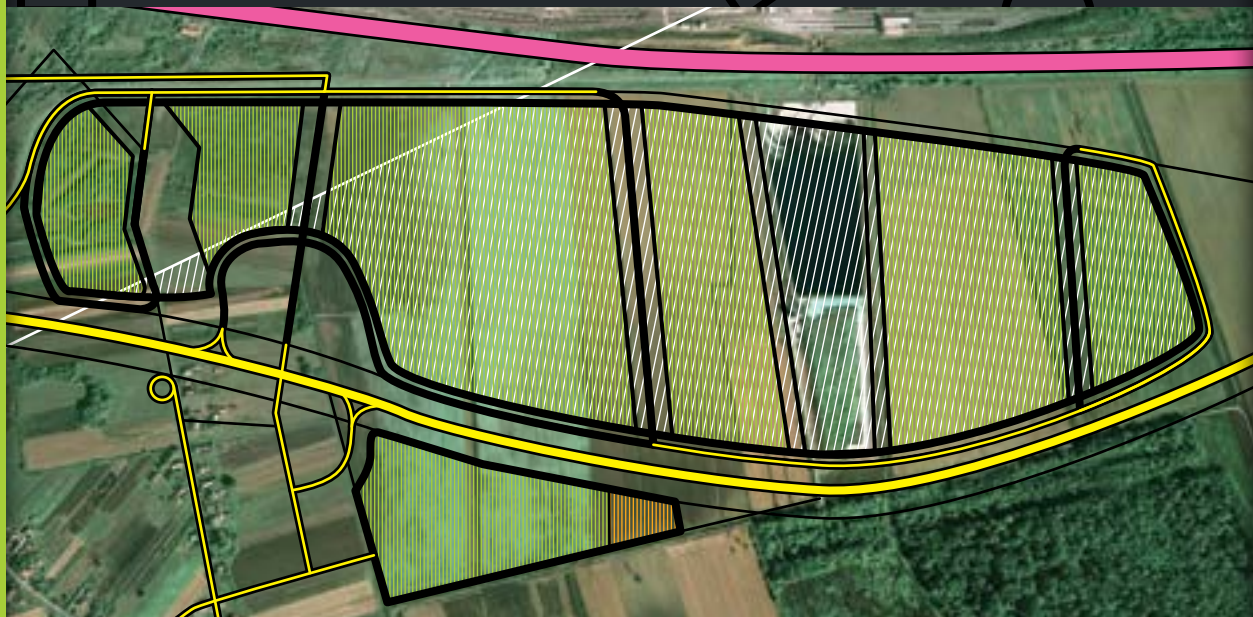
**Plots:** from 6 to 25 ha

**Owner:** 90% Town of Kutina

**Purpose:** logistics terminals for large storage warehouses, construction of industrial plants and various other activities.

**Price:** 1-7€/m<sup>2</sup>, depending on the agreement with potential investors.

**Infrastructure:** electricity, water, sewage, gas- sufficient capacity, depending on the investor's interest



## **Investment and opportunities**

### **TOURISM BASED ON NATURE PARK LONJSKO POLJE AND MOSLAVINA WINE ROAD ATTRACTIONS**

#### **Preconditions:**

Nature park Lonjsko polje (Lonja Valley) is the existing brand of the sustainable tourism concept based on natural, architecture and cultural heritage. The potentials are specific horse breeds, bird-watching (250 sorts of birds), wildlife and "living museums".

#### **EU funded project (780.000€) VISITOR CENTRE REPUŠNICA MOSLAVINA GATEWAY TO LONJSKO POLJE**

New Visitor centre with 6 theme paths in Repušnica, first entrance to Nature Park Lonjsko polje from Moslavina region side, just 5 km from Motorway exit Kutina. New Marketing strategy is set for this area certified for sustainable tourism through Europarc Charter.



INVEST  
IN KUTINA

### **Moslavina Wine Road**

Existing low intensity tourism concept based on traditional food and high quality genuine wine brand Škrlet with long tradition and annual processions based folklore

### **Other attractions**

High art level of sacred decorations in churches, Museum of Moslavina, medieval ruins Garić grad & Jelengrad, WWII holocaust memorial Museum in Jasenovac, Hotel Kutina \*\* (looking for investment to improve the offer and raise quality)

Sports infrastructure with significant development possibilities

### **Opportunities:**

Group and individual tourism possibilities close to the capital city Zagreb connected with the main communications. Significant number of transit individual tourists and groups.

[www.pp-lonjsko-polje.hr](http://www.pp-lonjsko-polje.hr)



## **STATE INCENTIVES FOR THE INVESTORS**

### **Tax relief**

For investments up to 1.000.000,00 EUR, a beneficiary of incentive measures will be having tax rate 50% lower than a regular tax rate for 10 years starting with the year of the investment if the investor opens at least five working positions connected to the investment business.

For the investment 1.000.000,00 - 3.000.000,00 EUR, 75% lower tax rate than a regular tax rate for 10 years, opens at least ten working positions.

For the investments higher than 3.000.000,00 EUR, 100% lower tax rate than a regular tax rate for 10 years, opens at least fifteen working positions.

### **Custom incentives**

In the case of the import of investment equipment and machinery, being a reasonable cost of the investment, the customs should not be paid for the merchandise from the chapter 84-90 of Law on customs tariff.

### **Incentives for reasonable cost for opening new working places for investment projects.**

30% of total reasonable cost for opening a new working place, maximum 9.000,00 EUR per new position.

...

Other incentives can be seen at [www.aik.invest.hr](http://www.aik.invest.hr)

INVEST  
IN KUTINA

## **TOWN of KUTINA**

Trg kralja Tomislava 12  
44320 Kutina, Croatia

**Mayor** Zlatko Babić  
Tel. +385 44 692 010  
gradonacelnik@kutina.hr  
[www.kutina.hr](http://www.kutina.hr)

## **City Department for Economy, Entrepreneurship and Development**

Hrvoje Krmelić  
Tel. + 385 44 692 015  
Csm +385 99 3999 524  
e-mail gospodarstvo@kutina.hr

## **Development Agency MRAV**

Tržna 8  
44320 Kutina, Croatia  
[www.ra-mrav.hr](http://www.ra-mrav.hr)  
Tomislav Kojundžić  
Tel. +385 44 659 078  
e-mail info@ra-mrav.hr

## **Agency for Investments and Competitiveness**

Zagreb Tower  
Radnička 80  
10000 Zagreb, Croatia

